

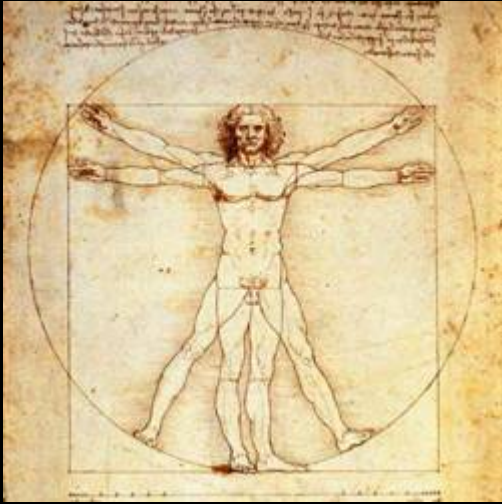
Danilo Domenici

Istituto Nazionale di Fisica Nucleare

Laboratori Nazionali di Frascati

**THE
INGREDIENTS
OF THE UNIVERSE**

Let's start from easy pieces



Human Body	
Oxygen	65%
Carbon	18%
Hydrogen	10%
Nitrogen	3%
Calcium	1.5%
Phosphorus	1.2%
Potassium	0.2%

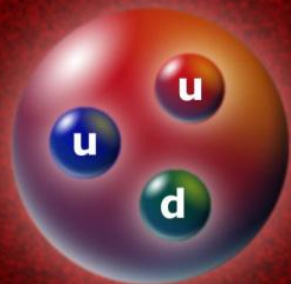
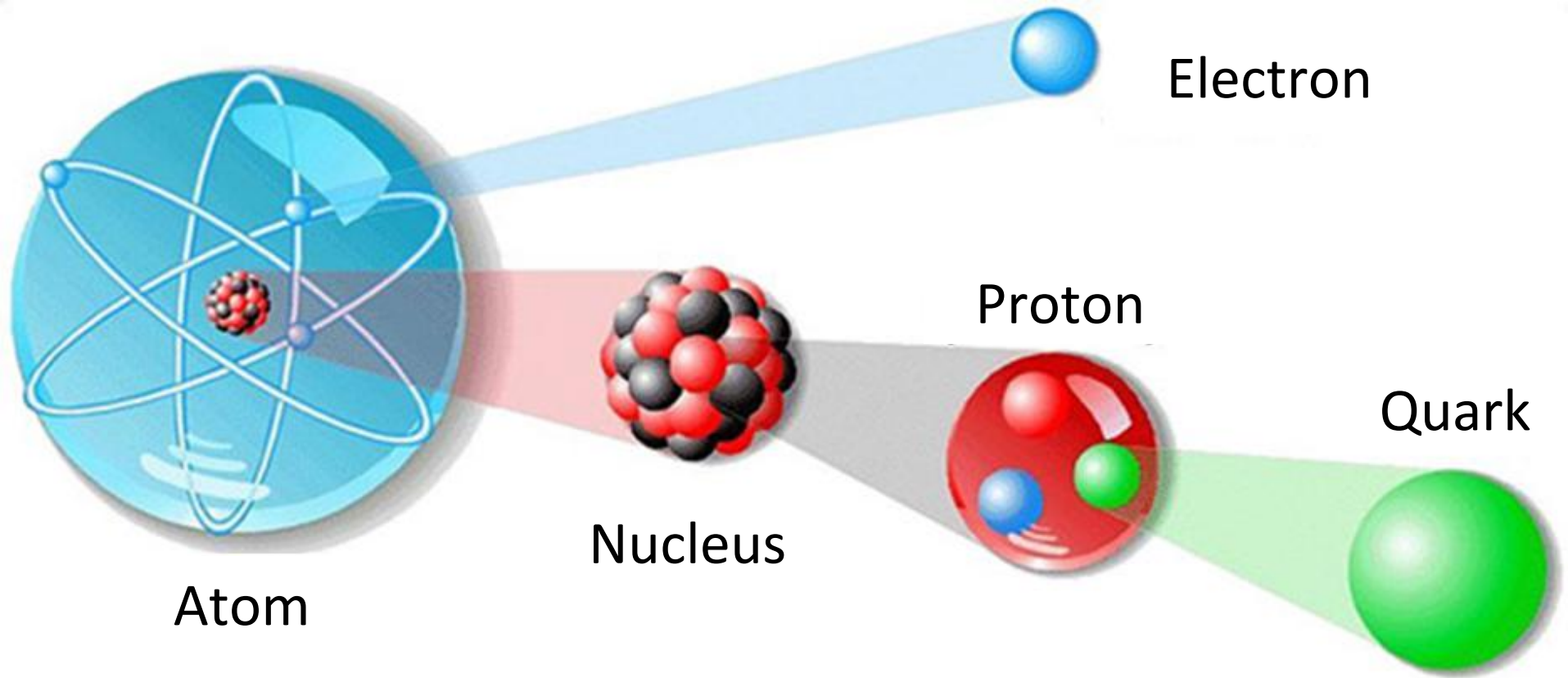
Earth	
Iron	35%
Oxygen	28%
Magnesium	17%
Silicon	13%
Nickel	3%
Sulfur	3%
Alluminum	0.4%

Milky Way	
Hydrogen	74%
Helium	24%
Others	2%

Periodic Table of the Elements

1 H Hydrogen 1.00794																	18 He Helium 4.002603
3 Li Lithium 6.941	4 Be Beryllium 9.012182	METALS ■ Alkali Metals ■ Alkaline Earth Metals ■ Lanthanoids ■ Actinoids ■ Transition Metals ■ Poor Metals NONMETALS ■ Other Nonmetals ■ Noble Gases										13 B Boron 10.811	14 C Carbon 12.0107	15 N Nitrogen 14.0067	16 O Oxygen 15.9994	17 F Fluorine 18.9984032	10 Ne Neon 20.1797
11 Na Sodium 22.98976928	12 Mg Magnesium 24.3050	3 Li : Solid	4 Be : Liquid	5 B : Gas	6 C : Unknown	7 N	8 O	9 F	10 Ne	13 Al Aluminium 26.9815386	14 Si Silicon 28.0855	15 P Phosphorus 30.973762	16 S Sulfur 32.065	17 Cl Chlorine 35.453	18 Ar Argon 39.948		
19 K Potassium 39.0983	20 Ca Calcium 40.078	21 Sc Scandium 44.955912	22 Ti Titanium 47.867	23 V Vanadium 50.9415	24 Cr Chromium 51.9961	25 Mn Manganese 54.938045	26 Fe Iron 55.845	27 Co Cobalt 58.933195	28 Ni Nickel 58.6934	29 Cu Copper 63.546	30 Zn Zinc 65.38	31 Ga Gallium 69.723	32 Ge Germanium 72.64	33 As Arsenic 74.92160	34 Se Selenium 78.96	35 Br Bromine 79.904	36 Kr Krypton 83.798
37 Rb Rubidium 85.4678	38 Sr Strontium 87.62	39 Y Yttrium 88.90585	40 Zr Zirconium 91.224	41 Nb Niobium 92.90638	42 Mo Molybdenum 95.96	43 Tc Technetium (97.9072)	44 Ru Ruthenium 101.07	45 Rh Rhodium 102.90550	46 Pd Palladium 106.42	47 Ag Silver 107.8682	48 Cd Cadmium 112.411	49 In Indium 114.818	50 Sn Tin 118.710	51 Sb Antimony 121.760	52 Te Tellurium 127.60	53 I Iodine 126.90447	54 Xe Xenon 131.293
55 Cs Caesium 132.9054519	56 Ba Barium 137.327	57-71	72 Hf Hafnium 178.49	73 Ta Tantalum 180.94788	74 W Tungsten 183.84	75 Re Rhenium 186.207	76 Os Osmium 190.23	77 Ir Iridium 192.217	78 Pt Platinum 195.084	79 Au Gold 196.966569	80 Hg Mercury 200.59	81 Tl Thallium 204.3833	82 Pb Lead 207.2	83 Bi Bismuth 208.98040	84 Po Polonium (208.9824)	85 At Astatine (209.9871)	86 Rn Radon (222.0176)
87 Fr Francium (223)	88 Ra Radium (226)	89-103	104 Rf Rutherfordium (261)	105 Db Dubnium (262)	106 Sg Seaborgium (266)	107 Bh Bohrium (264)	108 Hs Hassium (277)	109 Mt Meitnerium (268)	110 Ds Darmstadtium (271)	111 Rg Roentgenium (272)	112 Uub Ununbium (285)	113 Uut Ununtrium (284)	114 Uuq Ununquadium (289)	115 Uup Ununpentium (288)	116 Uuh Ununhexium (292)	117 Uus Ununseptium	118 Uuo Ununoctium (294)
57 La Lanthanum 138.90547	58 Ce Cerium 140.116	59 Pr Praseodymium 140.90765	60 Nd Neodymium 144.242	61 Pm Promethium (145)	62 Sm Samarium 150.36	63 Eu Europium 151.25	64 Gd Gadolinium 157.25	65 Tb Terbium 158.92535	66 Dy Dysprosium 162.500	67 Ho Holmium 164.93032	68 Er Erbium 167.259	69 Tm Thulium 168.93421	70 Yb Ytterbium 173.054	71 Lu Lutetium 174.9668			
89 Ac Actinium (227)	90 Th Thorium 232.03806	91 Pa Protactinium 231.03588	92 U Uranium 238.02891	93 Np Neptunium (237)	94 Pu Plutonium (244)	95 Am Americium (243)	96 Cm Curium (247)	97 Bk Berkelium (247)	98 Cf Californium (251)	99 Es Einsteinium (252)	100 Fm Fermium (257)	101 Md Mendelevium (258)	102 No Nobelium (259)	103 Lr Lawrencium (262)			

The Structure of the Atom



proton

All the Matter we are made of
is composed by just
3 Elementary Particles:

Quark Up

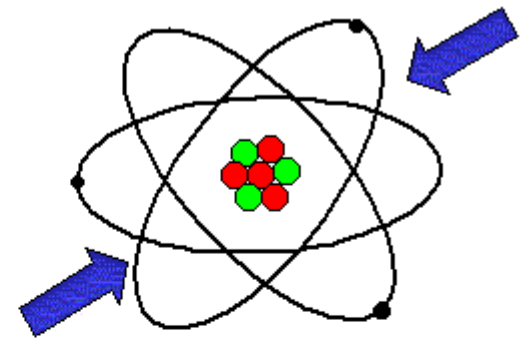
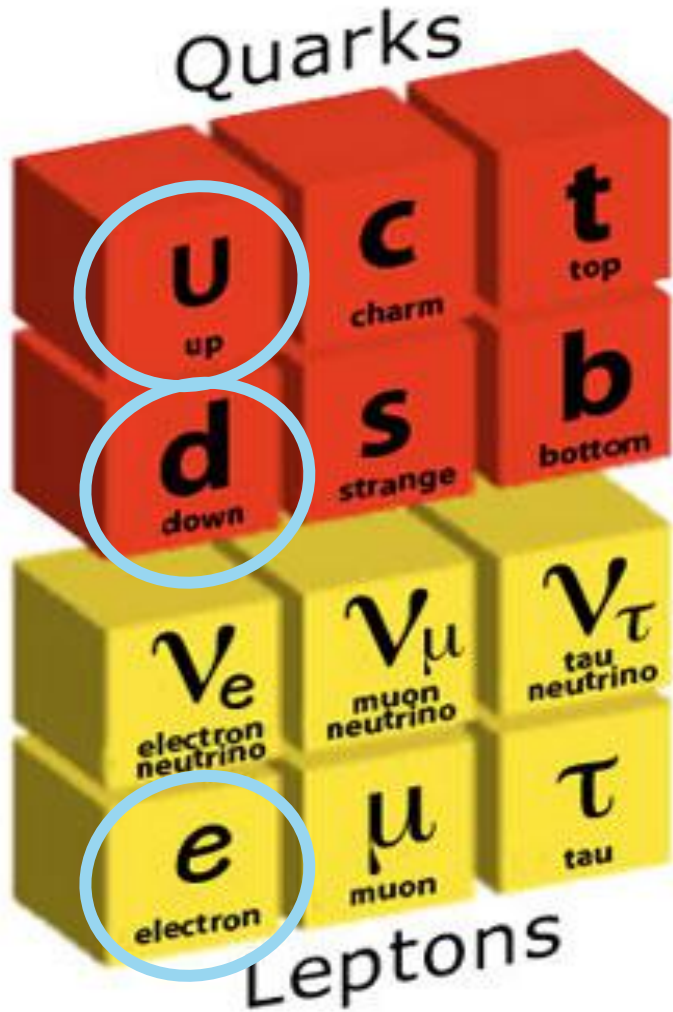
Quark Down

Electrons

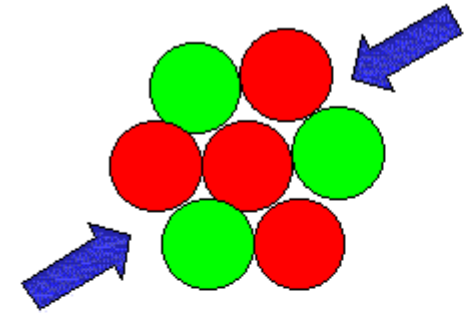


neutron

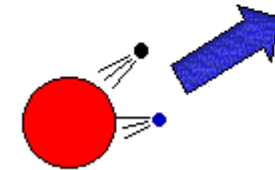
Elementary Particles and Fundamental Forces



Electromagnetic Force
(keeps atoms together)



Strong Force
(keeps nuclei together)



Weak Force
(breaks nuclei apart)

Neutrinos from Cosmos

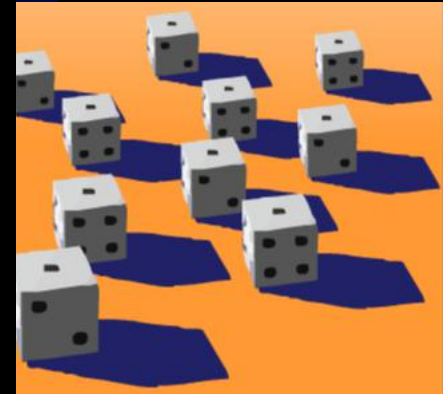
Neutrinos from Sun
70 billions /cm² s



Big Bang Neutrinos
3000 billions /cm² s

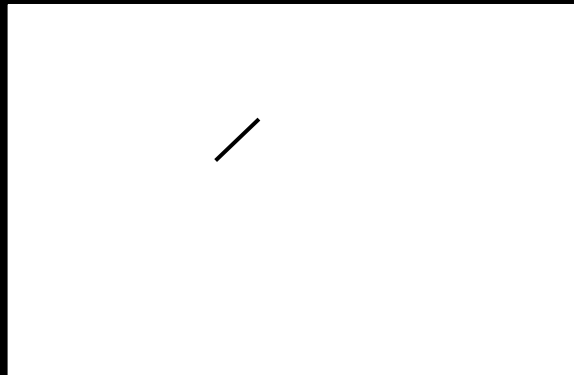


A neutrino crossing the Earth
has a 0.000001% probability
to hit something



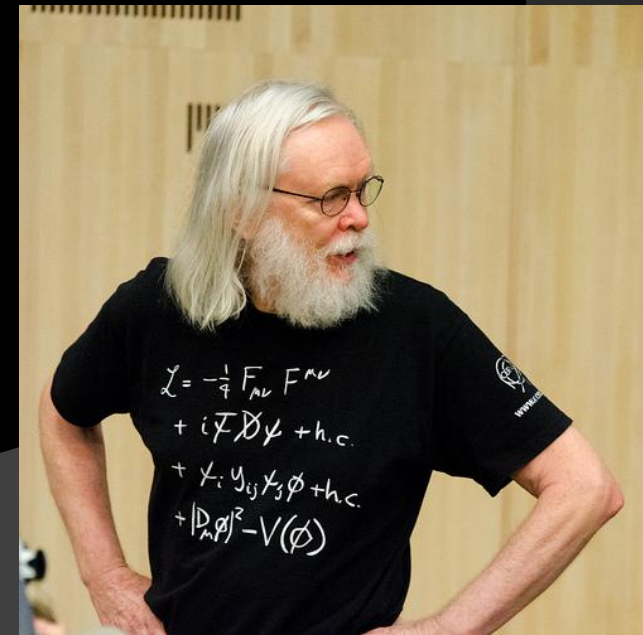
Elementary Particles and Fundamental Forces

Standard Model Lagrangian



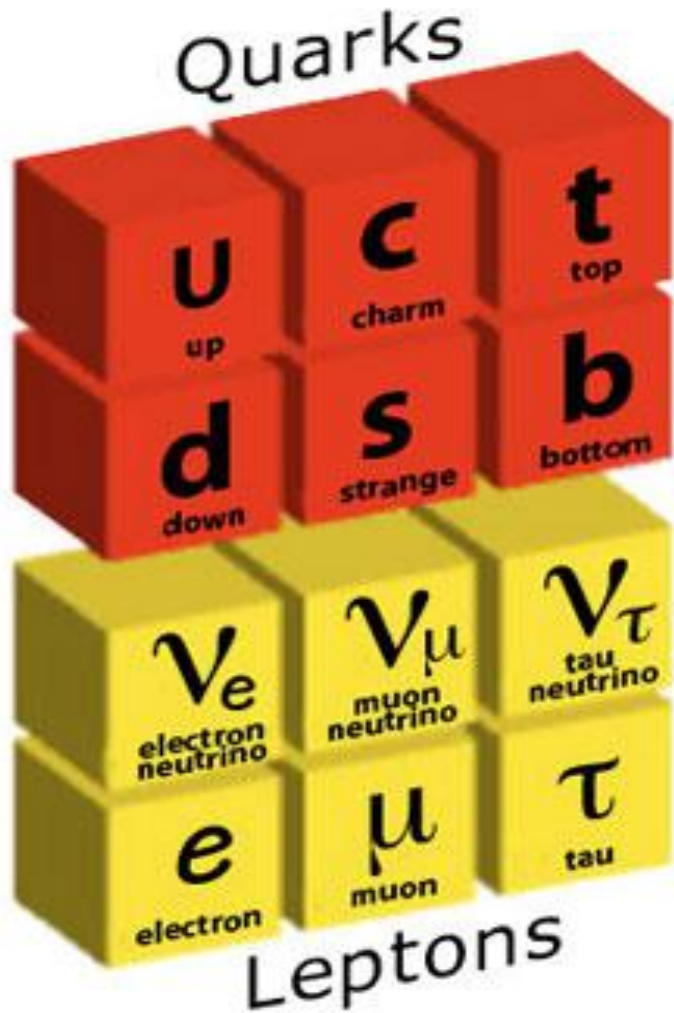
It's the function describing
all the microscopic world

Physics
Chemistry
Biology

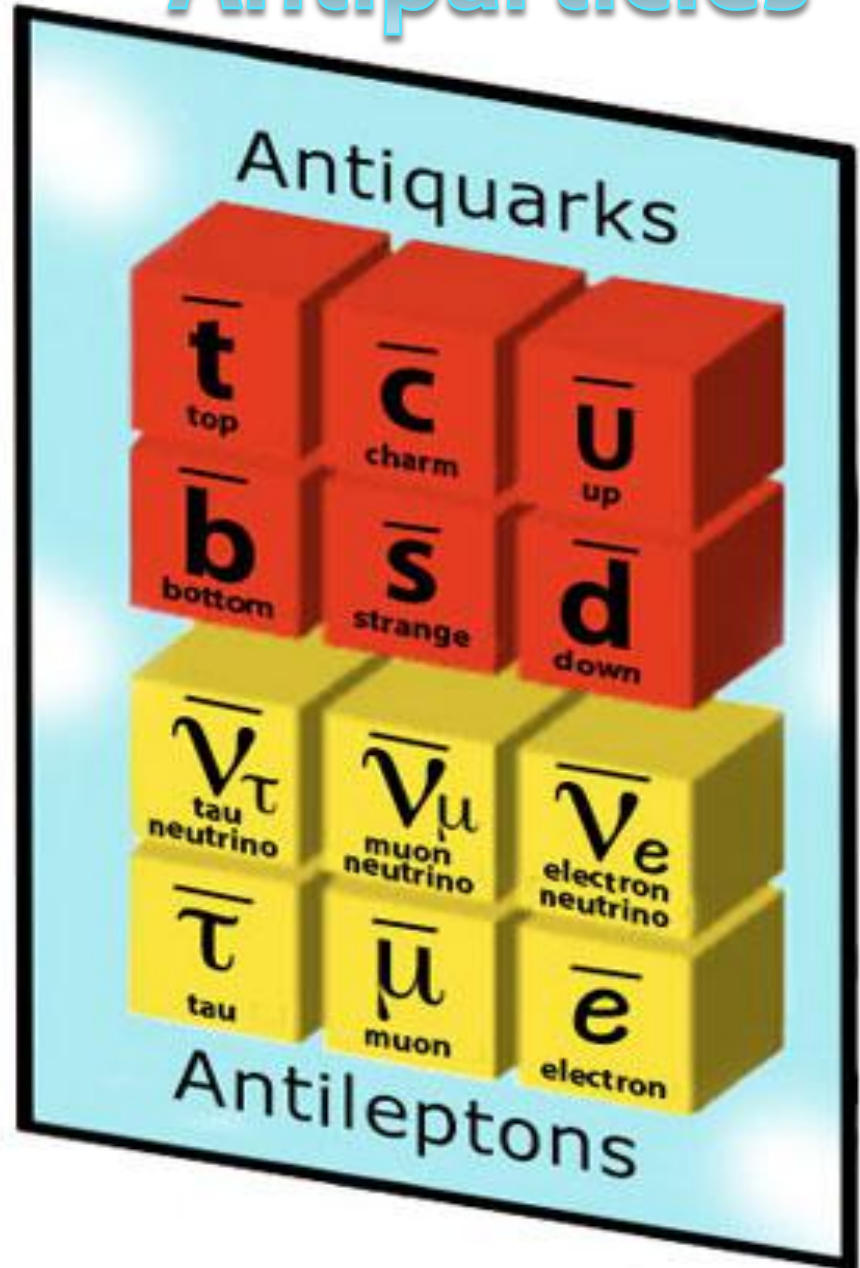


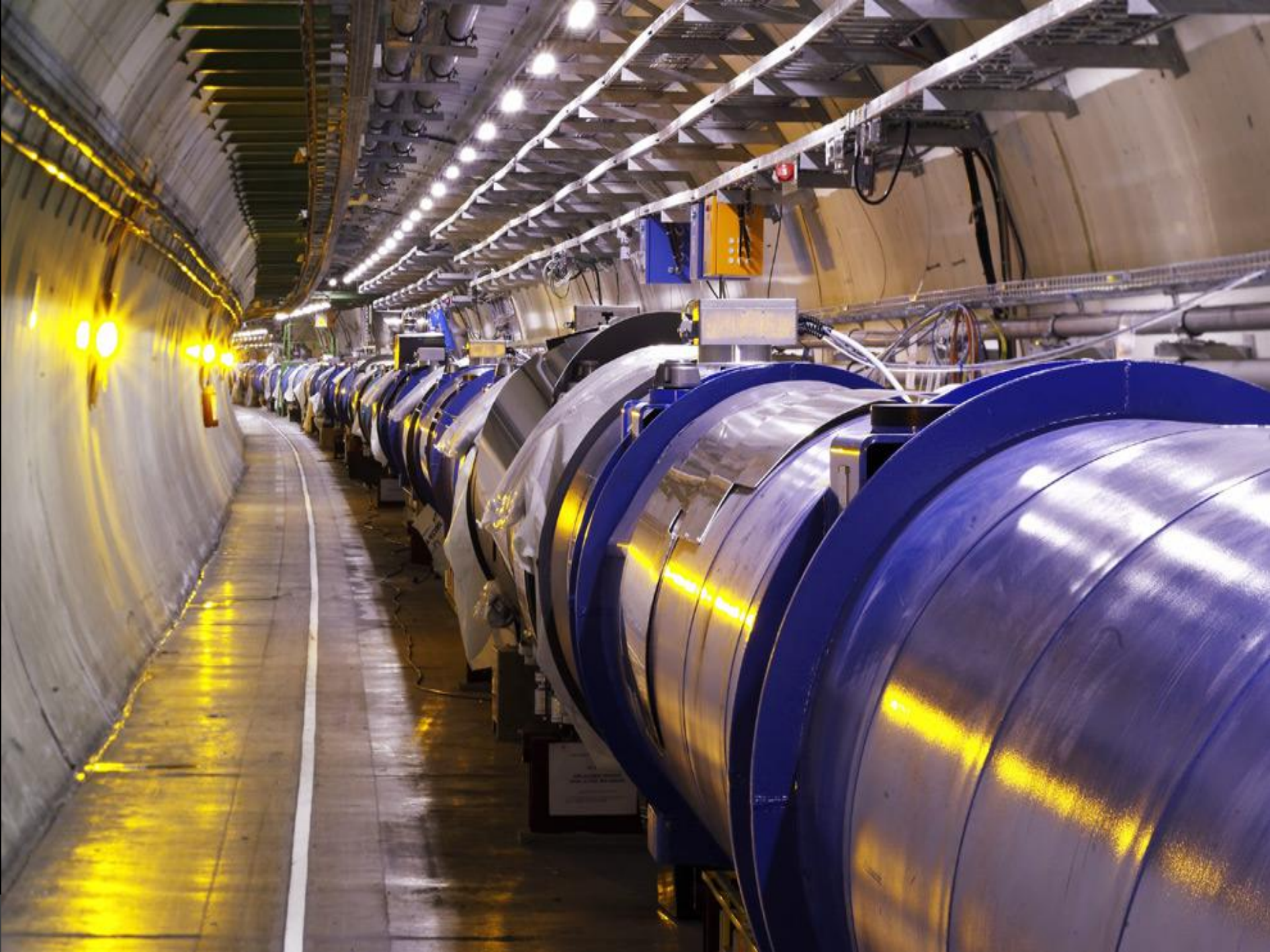
$$\begin{aligned}
& -\frac{1}{2}\partial_\nu g_\mu^a \partial_\nu g_\mu^a - g_s f^{abc} \partial_\mu g_\nu^a g_\mu^b g_\nu^c - \frac{1}{4}g_s^2 f^{abc} f^{ade} g_\mu^b g_\nu^c g_\mu^d g_\nu^e + \\
& \frac{1}{2}ig_s^2 (\bar{q}_i^\sigma \gamma^\mu q_j^\sigma) g_\mu^a + \bar{G}^a \partial^2 G^a + g_s f^{abc} \partial_\mu \bar{G}^a G^b g_\mu^c - \partial_\nu W_\mu^+ \partial_\nu W_\mu^- - \\
& M^2 W_\mu^+ W_\mu^- - \frac{1}{2}\partial_\nu Z_\mu^0 \partial_\nu Z_\mu^0 - \frac{1}{2c_w^2} M^2 Z_\mu^0 Z_\mu^0 - \frac{1}{2}\partial_\mu A_\nu \partial_\mu A_\nu - \frac{1}{2}\partial_\mu H \partial_\mu H - \\
& \frac{1}{2}m_h^2 H^2 - \partial_\mu \phi^+ \partial_\mu \phi^- - M^2 \phi^+ \phi^- - \frac{1}{2}\partial_\mu \phi^0 \partial_\mu \phi^0 - \frac{1}{2c_w^2} M \phi^0 \phi^0 - \beta_h [\frac{2M^2}{g^2} + \\
& \frac{2M}{g} H + \frac{1}{2}(H^2 + \phi^0 \phi^0 + 2\phi^+ \phi^-)] + \frac{2M^4}{g^2} \alpha_h - igc_w [\partial_\nu Z_\mu^0 (W_\mu^+ W_\nu^- - \\
& W_\nu^+ W_\mu^-) - Z_\nu^0 (W_\mu^+ \partial_\nu W_\mu^- - W_\mu^- \partial_\nu W_\mu^+) + Z_\mu^0 (W_\nu^+ \partial_\nu W_\mu^- - \\
& W_\nu^- \partial_\nu W_\mu^+)] - ig s_w [\partial_\nu A_\mu (W_\mu^+ W_\nu^- - W_\nu^+ W_\mu^-) - A_\nu (W_\mu^+ \partial_\nu W_\mu^- - \\
& W_\nu^- \partial_\nu W_\mu^+) + A_\mu (W_\nu^+ \partial_\nu W_\mu^- - W_\nu^- \partial_\nu W_\mu^+)] - \frac{1}{2}g^2 W_\mu^+ W_\mu^- W_\nu^+ W_\nu^- + \\
& \frac{1}{2}g^2 W_\mu^+ W_\nu^- W_\mu^+ W_\nu^- + g^2 c_w^2 (Z_\mu^0 W_\mu^+ Z_\nu^0 W_\nu^- - Z_\mu^0 Z_\mu^0 W_\nu^+ W_\nu^-) + \\
& g^2 s_w^2 (A_\mu W_\mu^+ A_\nu W_\nu^- - A_\mu A_\mu W_\nu^+ W_\nu^-) + g^2 s_w c_w [A_\mu Z_\nu^0 (W_\mu^+ W_\nu^- - \\
& W_\nu^+ W_\mu^-) - 2A_\mu Z_\mu^0 W_\nu^+ W_\nu^-] - g\alpha [H^3 + H\phi^0 \phi^0 + 2H\phi^+ \phi^-] - \\
& \frac{1}{8}g^2 \alpha_h [H^4 + (\phi^0)^4 + 4(\phi^+ \phi^-)^2 + 4(\phi^0)^2 \phi^+ \phi^- + 4H^2 \phi^+ \phi^- + 2(\phi^0)^2 H^2] - \\
& g M W_\mu^+ W_\mu^- H - \frac{1}{2}g \frac{M}{c_w^2} Z_\mu^0 Z_\mu^0 H - \frac{1}{2}ig [W_\mu^+ (\phi^0 \partial_\mu \phi^- - \phi^- \partial_\mu \phi^0) - \\
& W_\mu^- (\phi^0 \partial_\mu \phi^+ - \phi^+ \partial_\mu \phi^0)] + \frac{1}{2}g [W_\mu^+ (H \partial_\mu \phi^- - \phi^- \partial_\mu H) - W_\mu^- (H \partial_\mu \phi^+ - \\
& \phi^+ \partial_\mu H)] + \frac{1}{2}g \frac{1}{c_w} (Z_\mu^0 (H \partial_\mu \phi^0 - \phi^0 \partial_\mu H) - ig \frac{s_w^2}{c_w} M Z_\mu^0 (W_\mu^+ \phi^- - W_\mu^- \phi^+) + \\
& ig s_w M A_\mu (W_\mu^+ \phi^- - W_\mu^- \phi^+) - ig \frac{1-2c_w^2}{2c_w} Z_\mu^0 (\phi^+ \partial_\mu \phi^- - \phi^- \partial_\mu \phi^+) + \\
& ig s_w A_\mu (\phi^+ \partial_\mu \phi^- - \phi^- \partial_\mu \phi^+) - \frac{1}{4}g^2 W_\mu^+ W_\mu^- [H^2 + (\phi^0)^2 + 2\phi^+ \phi^-] - \\
& \frac{1}{4}g^2 \frac{1}{c_w^2} Z_\mu^0 Z_\mu^0 [H^2 + (\phi^0)^2 + 2(2s_w^2 - 1)^2 \phi^+ \phi^-] - \frac{1}{2}g^2 \frac{s_w^2}{c_w} Z_\mu^0 \phi^0 (W_\mu^+ \phi^- + \\
& W_\mu^- \phi^+) - \frac{1}{2}ig^2 \frac{s_w^2}{c_w} Z_\mu^0 H (W_\mu^+ \phi^- - W_\mu^- \phi^+) + \frac{1}{2}g^2 s_w A_\mu \phi^0 (W_\mu^+ \phi^- + \\
& W_\mu^- \phi^+) + \frac{1}{2}ig^2 s_w A_\mu H (W_\mu^+ \phi^- - W_\mu^- \phi^+) - g^2 \frac{s_w}{c_w} (2c_w^2 - 1) Z_\mu^0 A_\mu \phi^+ \phi^- - \\
& g^1 s_w^2 A_\mu A_\mu \phi^+ \phi^- - \bar{e}^\lambda (\gamma \partial + m_e^\lambda) e^\lambda - \bar{\nu}^\lambda \gamma \partial \nu^\lambda - \bar{u}_j^\lambda (\gamma \partial + m_u^\lambda) u_j^\lambda - \\
& \bar{d}_j^\lambda (\gamma \partial + m_d^\lambda) d_j^\lambda + ig s_w A_\mu [-(\bar{e}^\lambda \gamma^\mu e^\lambda) + \frac{2}{3}(\bar{u}_j^\lambda \gamma^\mu u_j^\lambda) - \frac{1}{3}(\bar{d}_j^\lambda \gamma^\mu d_j^\lambda)] + \\
& \frac{ig}{4c_w} Z_\mu^0 [(\bar{\nu}^\lambda \gamma^\mu (1 + \gamma^5) \nu^\lambda) + (\bar{e}^\lambda \gamma^\mu (4s_w^2 - 1 - \gamma^5) e^\lambda) + (\bar{u}_j^\lambda \gamma^\mu (\frac{4}{3}s_w^2 - \\
& 1 - \gamma^5) u_j^\lambda) + (\bar{d}_j^\lambda \gamma^\mu (1 - \frac{8}{3}s_w^2 - \gamma^5) d_j^\lambda)] + \frac{ig}{2\sqrt{2}} W_\mu^+ [(\bar{\nu}^\lambda \gamma^\mu (1 + \gamma^5) \nu^\lambda) + \\
& (\bar{u}_j^\lambda \gamma^\mu (1 + \gamma^5) C_{\lambda\kappa} d_j^\kappa)] + \frac{ig}{2\sqrt{2}} W_\mu^- [(\bar{e}^\lambda \gamma^\mu (1 + \gamma^5) e^\lambda) + (\bar{d}_j^\kappa C_{\lambda\kappa}^\dagger \gamma^\mu (1 + \\
& \gamma^5) u_j^\lambda)] + \frac{ig}{2\sqrt{2}} \frac{m_\lambda^\lambda}{M} [-\phi^+ (\bar{\nu}^\lambda (1 - \gamma^5) e^\lambda) + \phi^- (\bar{e}^\lambda (1 + \gamma^5) \nu^\lambda)] - \\
& \frac{g}{2} \frac{m_\lambda^\lambda}{M} [H (\bar{e}^\lambda e^\lambda) + i\phi^0 (\bar{e}^\lambda \gamma^5 e^\lambda)] + \frac{ig}{2M\sqrt{2}} \phi^+ [-m_d^\kappa (\bar{u}_j^\lambda C_{\lambda\kappa} (1 - \gamma^5) d_j^\kappa) + \\
& m_u^\kappa (\bar{u}_j^\lambda C_{\lambda\kappa} (1 + \gamma^5) d_j^\kappa) + \frac{ig}{2M\sqrt{2}} \phi^- [m_d^\lambda (\bar{d}_j^\lambda C_{\lambda\kappa}^\dagger (1 + \gamma^5) u_j^\kappa) - m_u^\kappa (\bar{d}_j^\lambda C_{\lambda\kappa}^\dagger (1 - \\
& \gamma^5) u_j^\kappa) - \frac{g}{2} \frac{m_\lambda^\lambda}{M} H (\bar{u}_j^\lambda u_j^\lambda) - \frac{g}{2} \frac{m_\lambda^\lambda}{M} H (\bar{d}_j^\lambda d_j^\lambda) + \frac{ig}{2} \frac{m_\lambda^\lambda}{M} \phi^0 (\bar{u}_j^\lambda \gamma^5 u_j^\lambda) - \\
& \frac{ig}{2} \frac{m_\lambda^\lambda}{M} \phi^0 (\bar{d}_j^\lambda \gamma^5 d_j^\lambda) + \bar{X}^+ (\partial^2 - M^2) X^+ + \bar{X}^- (\partial^2 - M^2) X^- + \bar{X}^0 (\partial^2 - \\
& \frac{M^2}{c_w^2}) X^0 + \bar{Y} \partial^2 Y + igc_w W_\mu^+ (\partial_\mu \bar{X}^0 X^- - \partial_\mu \bar{X}^+ X^0) + ig s_w W_\mu^+ (\partial_\mu \bar{Y} X^- - \\
& \partial_\mu \bar{X}^+ Y) + igc_w W_\mu^- (\partial_\mu \bar{X}^- X^0 - \partial_\mu \bar{X}^0 X^+) + ig s_w W_\mu^- (\partial_\mu \bar{X}^- Y - \\
& \partial_\mu \bar{Y} X^+) + igc_w Z_\mu^0 (\partial_\mu \bar{X}^+ X^+ - \partial_\mu \bar{X}^- X^-) + ig s_w A_\mu (\partial_\mu \bar{X}^+ X^+ - \\
& \partial_\mu \bar{X}^- X^-) - \frac{1}{2}g M [\bar{X}^+ X^+ H + \bar{X}^- X^- H + \frac{1}{c_w^2} \bar{X}^0 X^0 H] + \\
& \frac{1-2c_w^2}{2c_w} ig M [\bar{X}^+ X^0 \phi^+ - \bar{X}^- X^0 \phi^-] + \frac{1}{2c_w} ig M [\bar{X}^0 X^- \phi^+ - \bar{X}^0 X^+ \phi^-] + \\
& ig M s_w [\bar{X}^0 X^- \phi^+ - \bar{X}^0 X^+ \phi^-] + \frac{1}{2}ig M [\bar{X}^+ X^+ \phi^0 - \bar{X}^- X^- \phi^0]
\end{aligned}$$

Particles

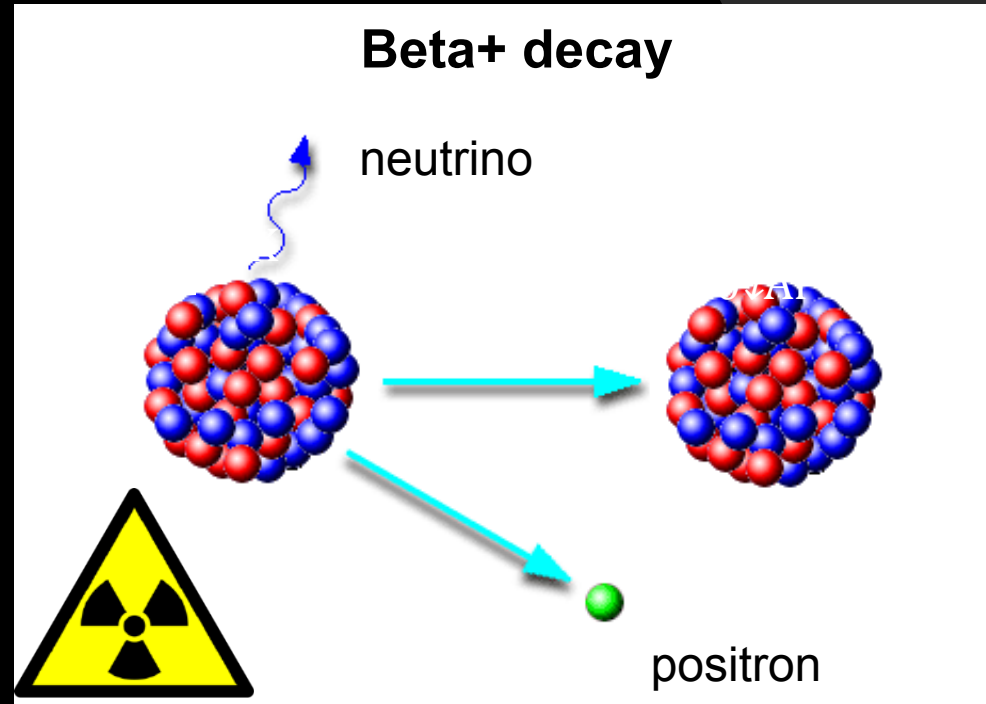


Antiparticles





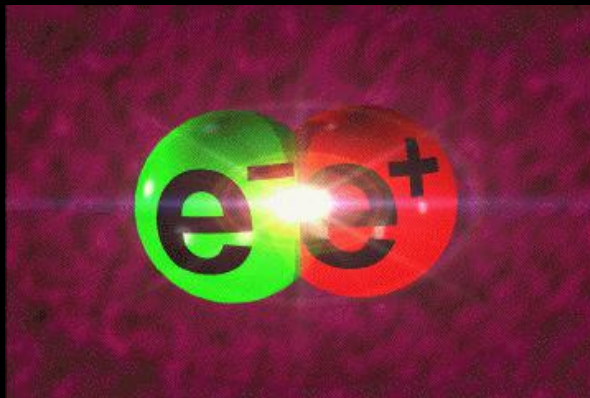
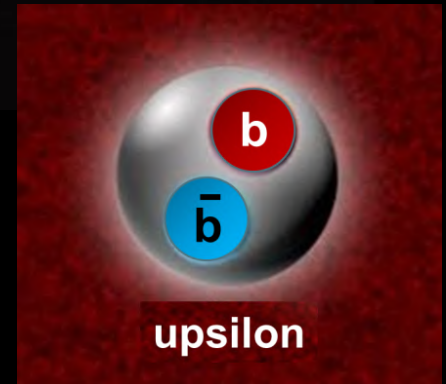
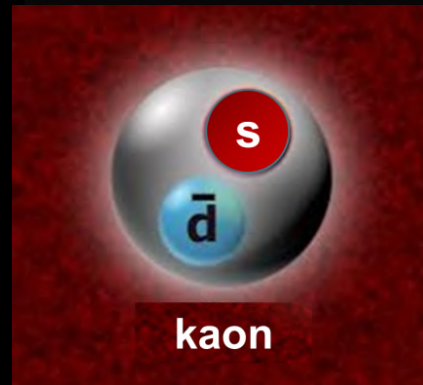
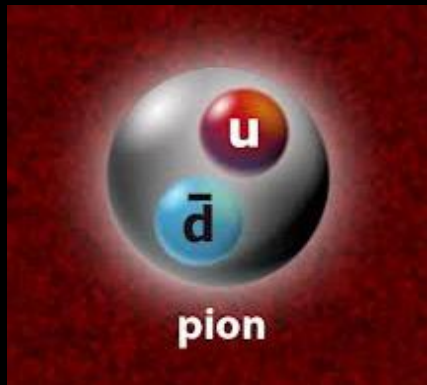
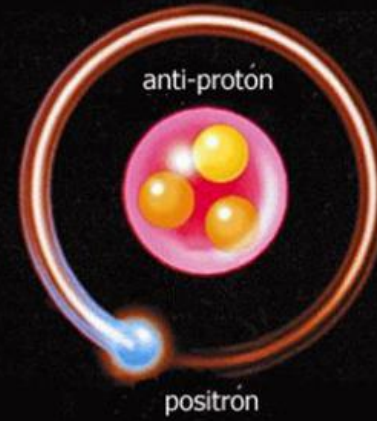
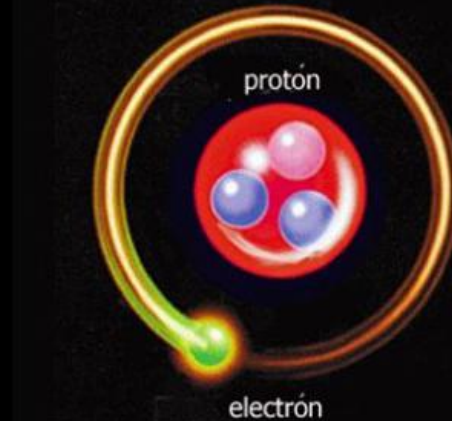
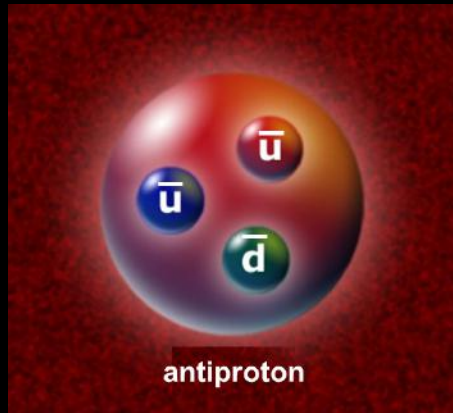
Where is the Antimatter?



Potassium-40 is a natural isotope ingested when drinking mineral water and eating bananas

A 80 kg weight person emits 180 positrons per hour!

Antimatter



$E = mc^2$
Albert Einstein 1905

And in the Universe?

Should antimatter-made galaxies exist we would see huge amount of radiation coming from the clash of Matter and Antimatter

Galaxies

Anti-galaxies

But we do not see it!

**Antimatter is not an ingredient of the Universe
Universe is only made of Matter**

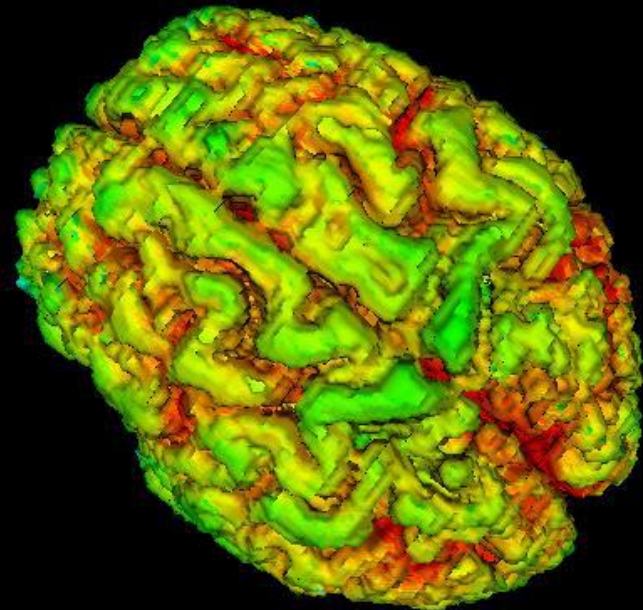
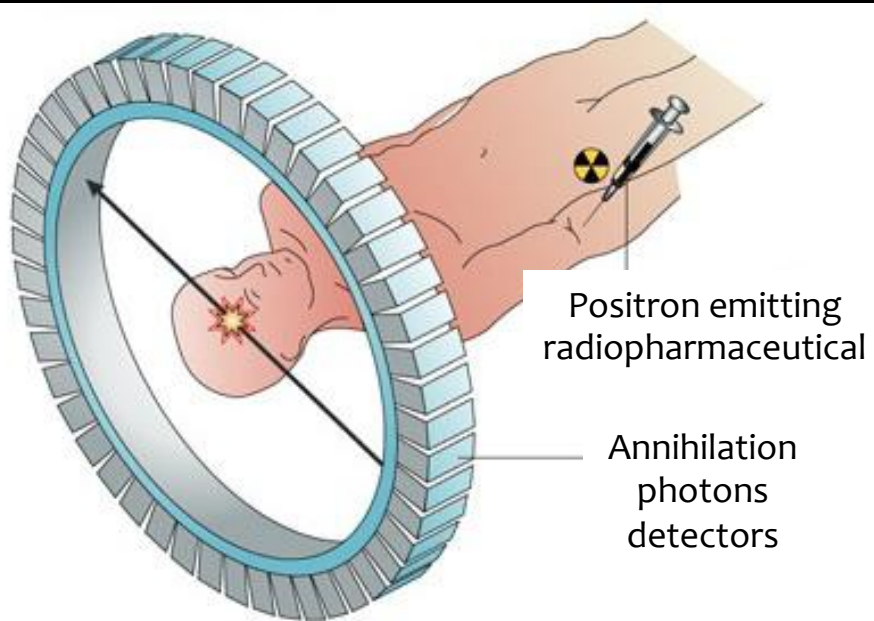
Antimatter is a serious thing



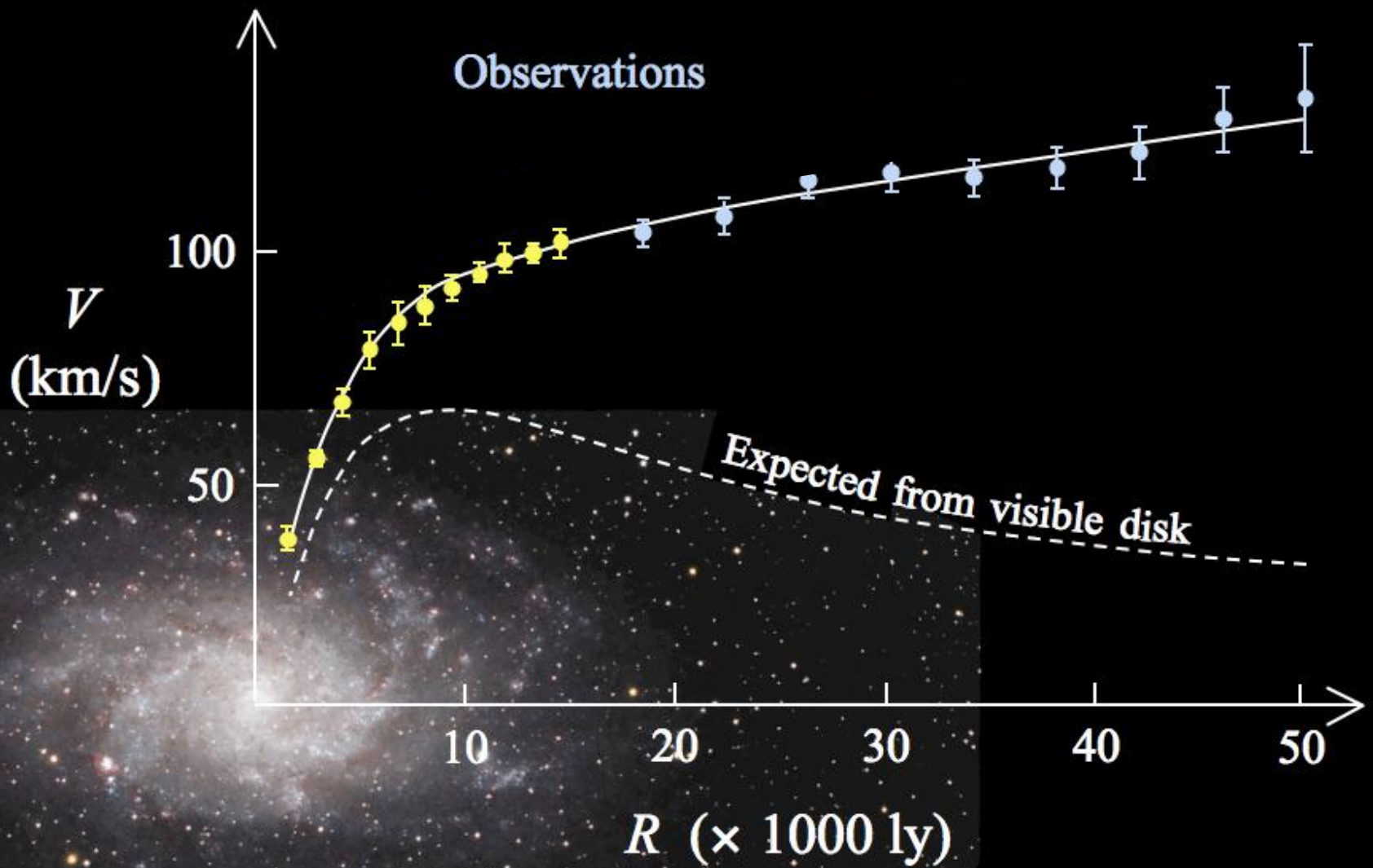
Energy required to produce antimatter is much higher than energy produced by its annihilation



PET (Positron Emission Tomography) Cancer Diagnosis







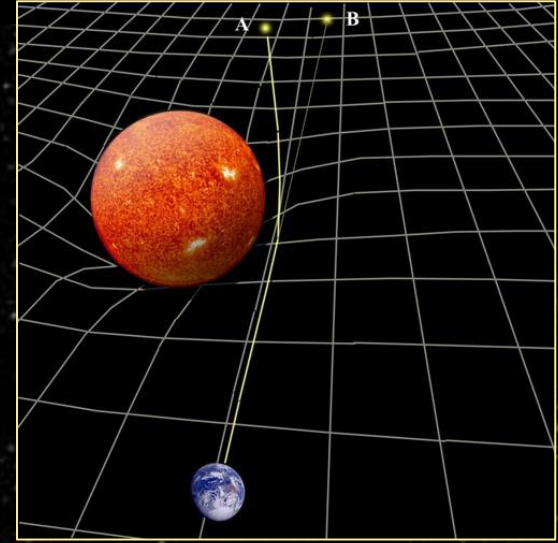
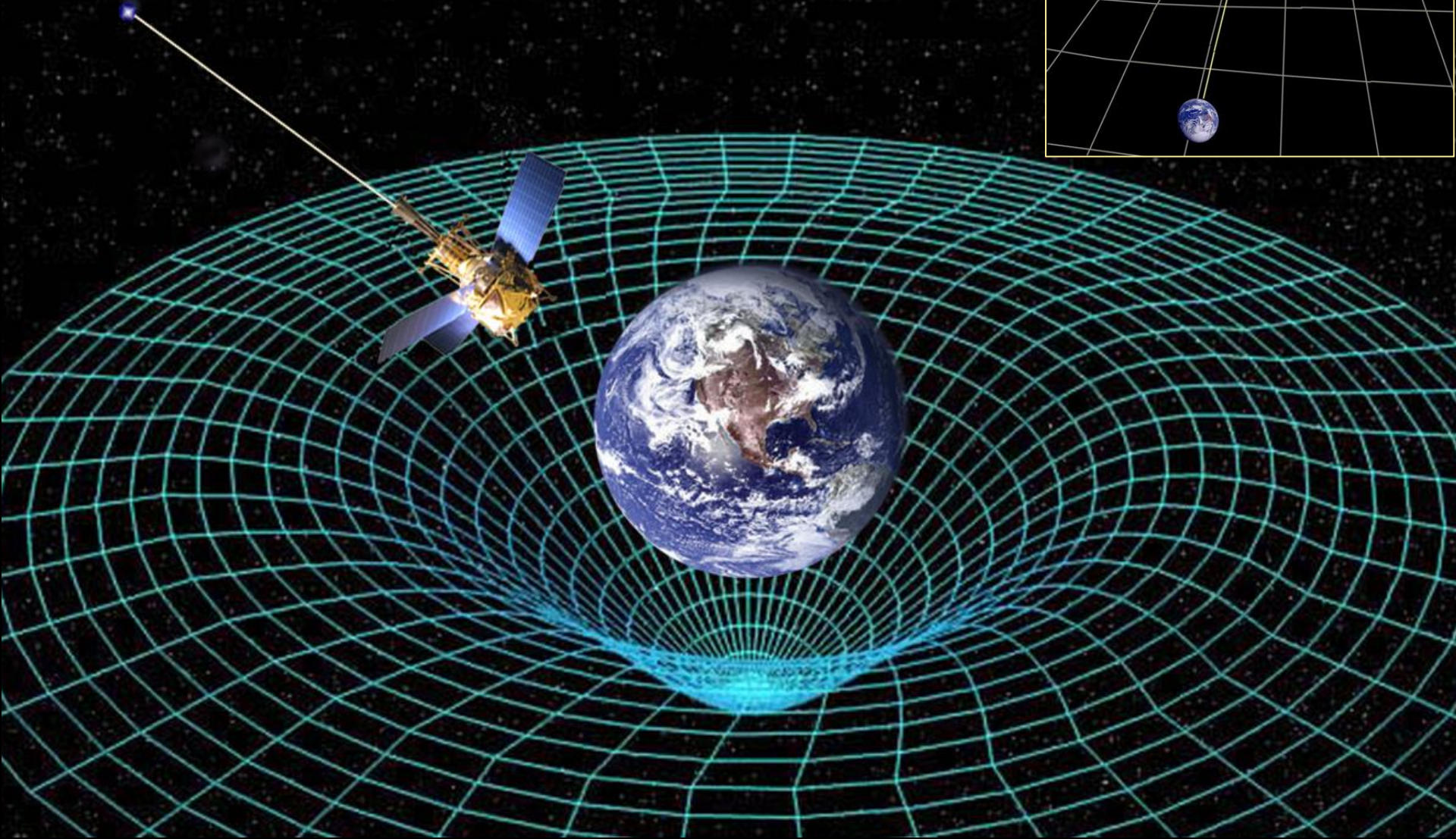
Amazingly outermost stars orbit faster
Galaxies are immersed in cloud of matter acting gravitationally
but not emitting any kind of radiation



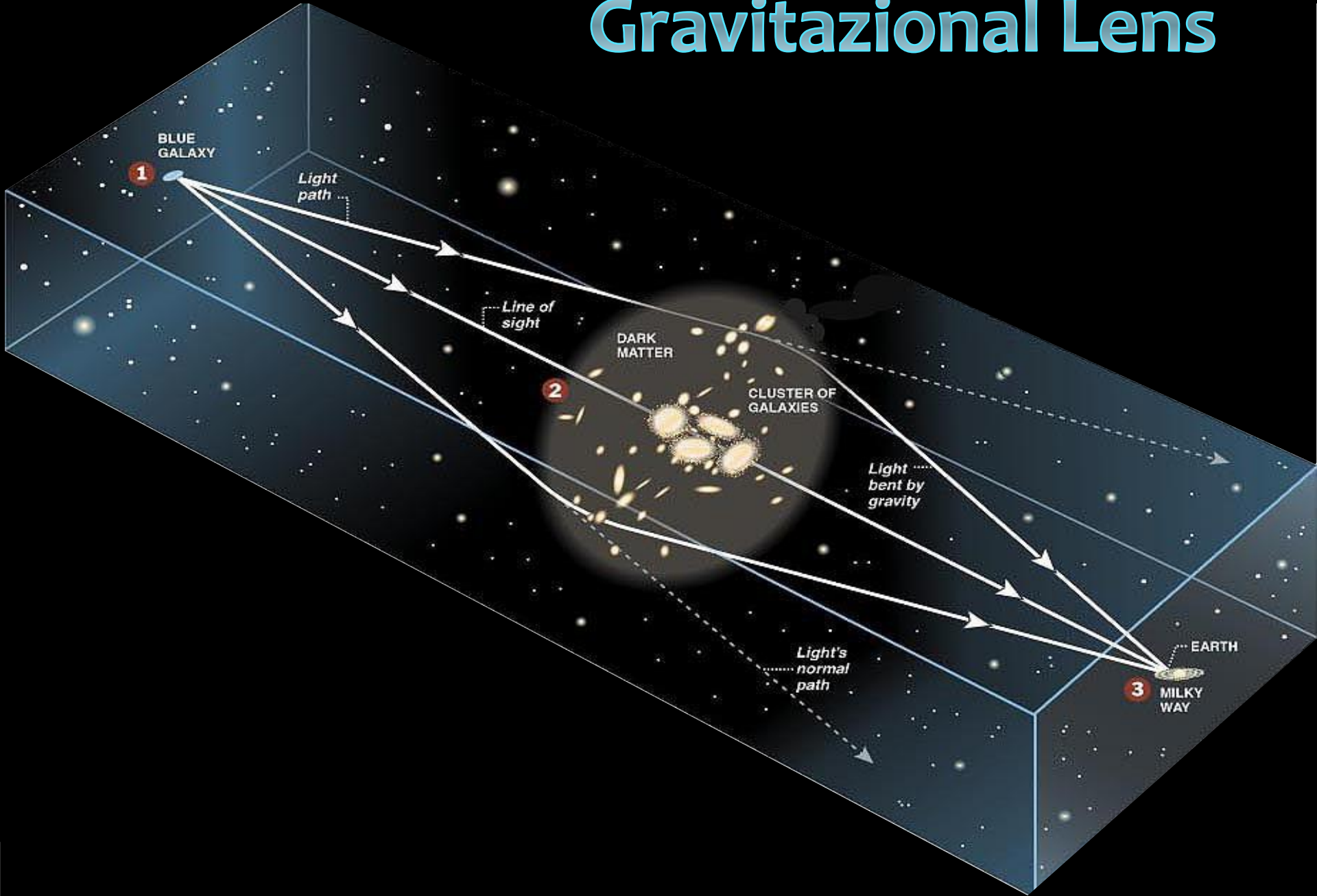
Galaxy

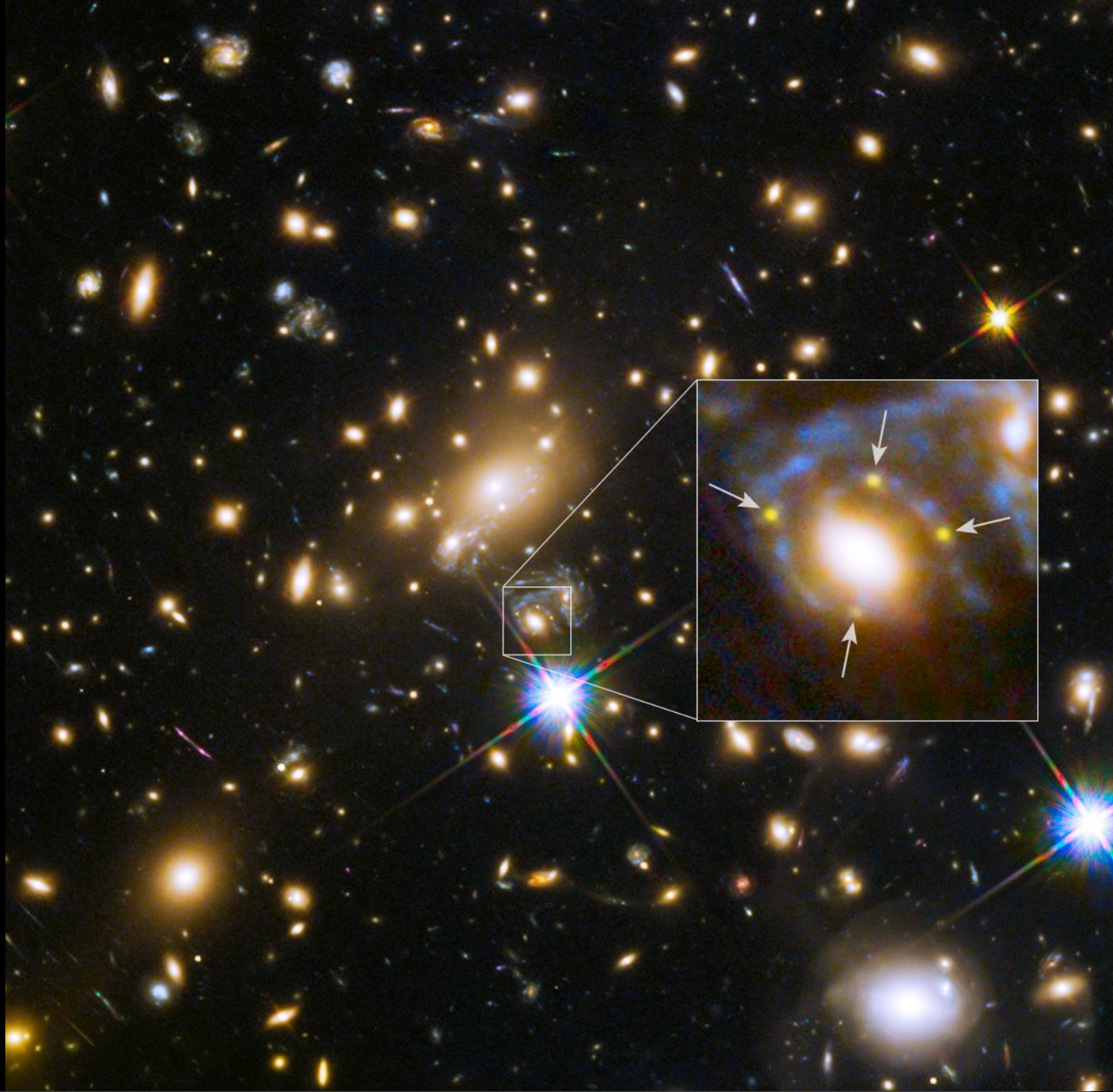
Dark Matter

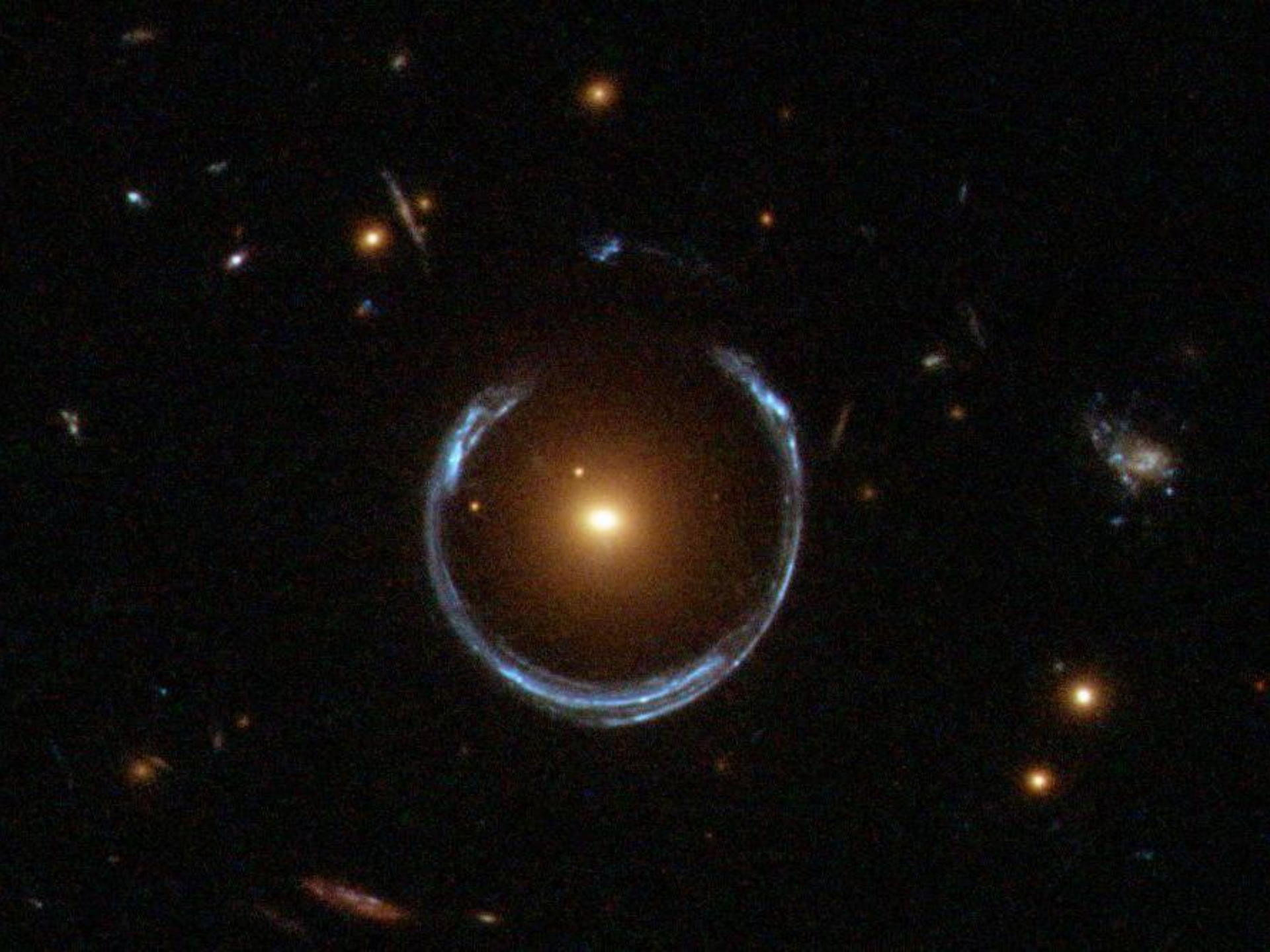
General Theory of Relativity describes **Gravity** as a geometrical effect of the curvature of the space created by the presence of matter. Light is bent by matter as well!



Gravitational Lens

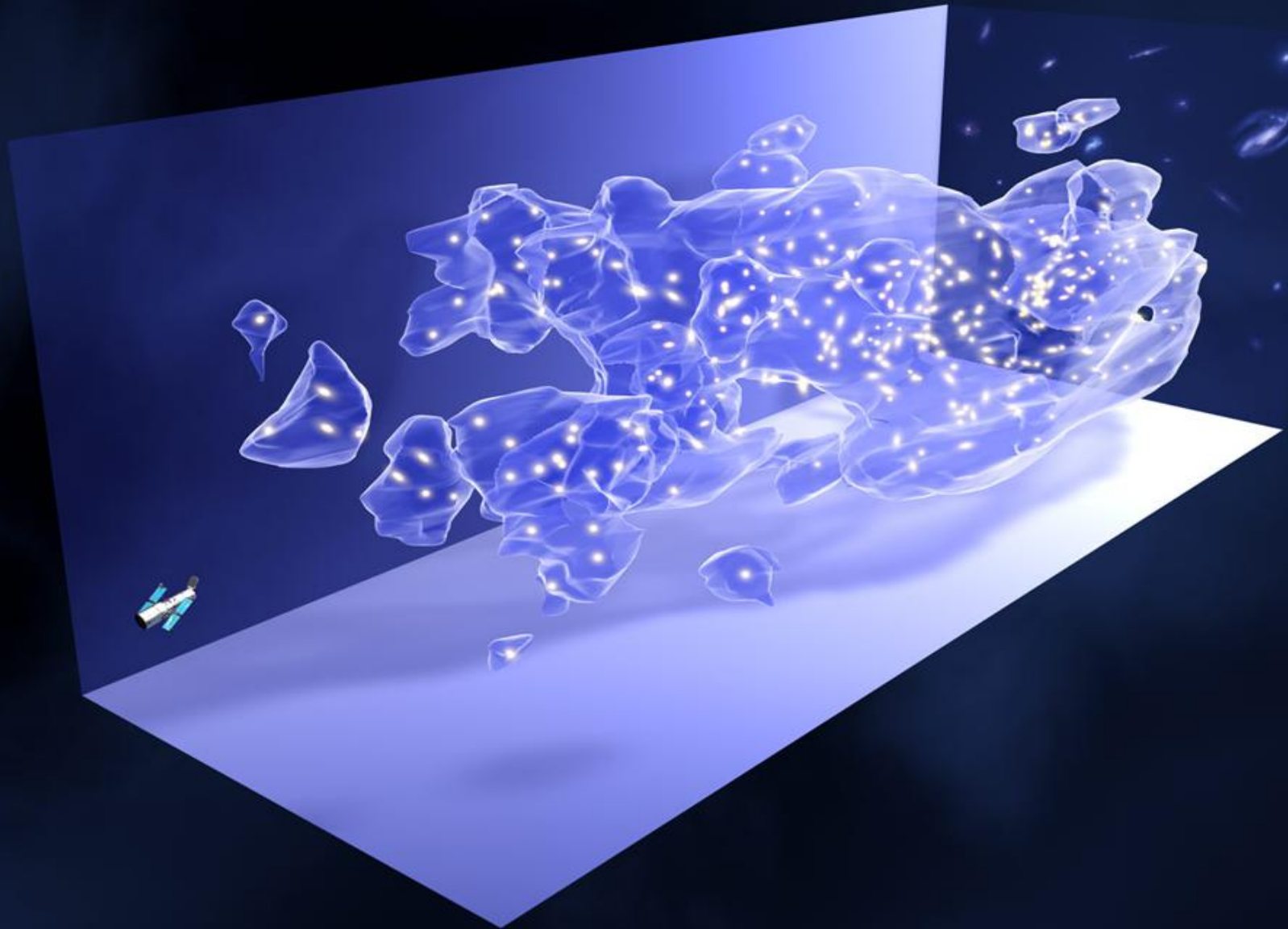


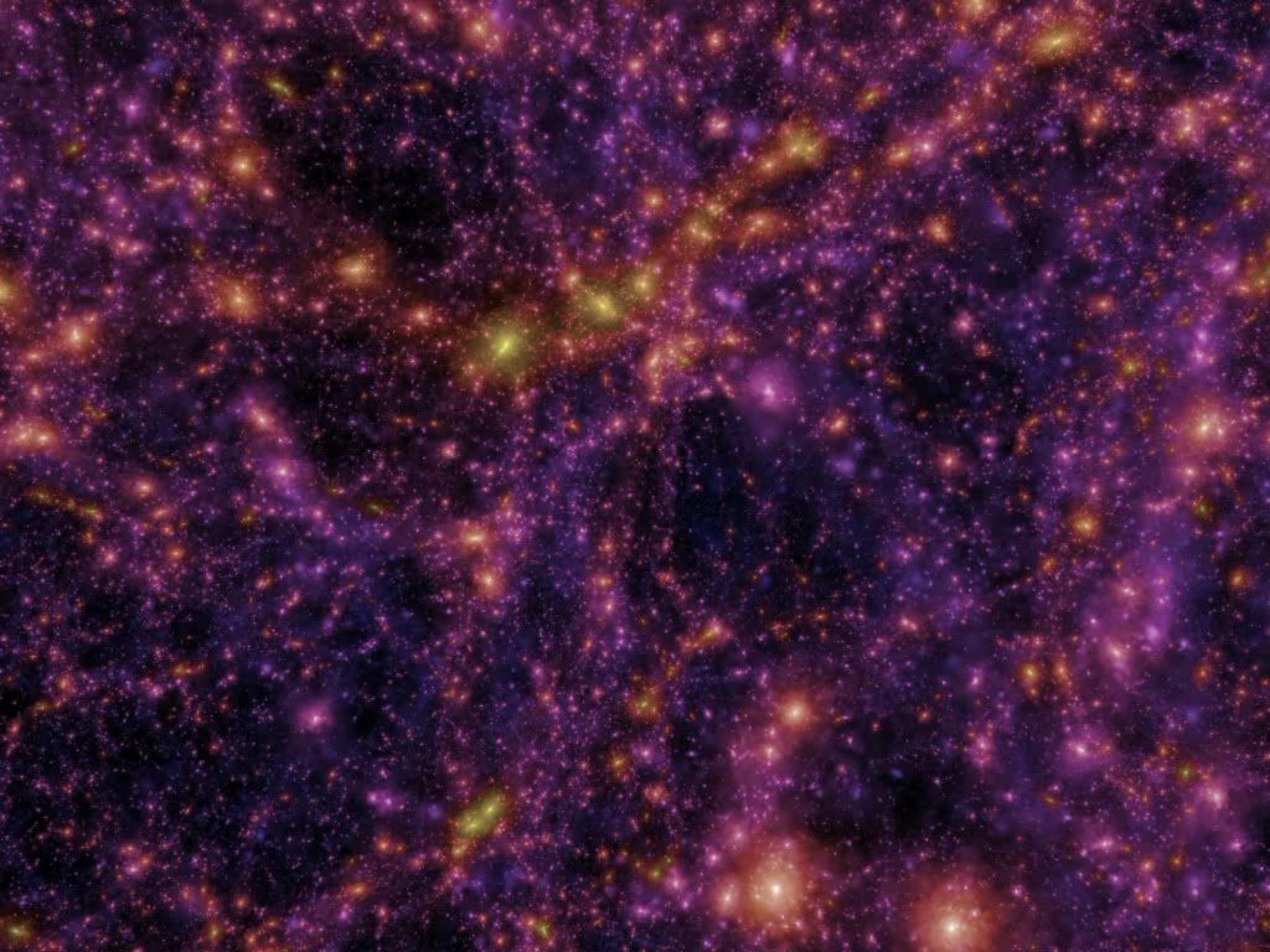






The whole Universe is immersed in a
Dark Matter cloud!





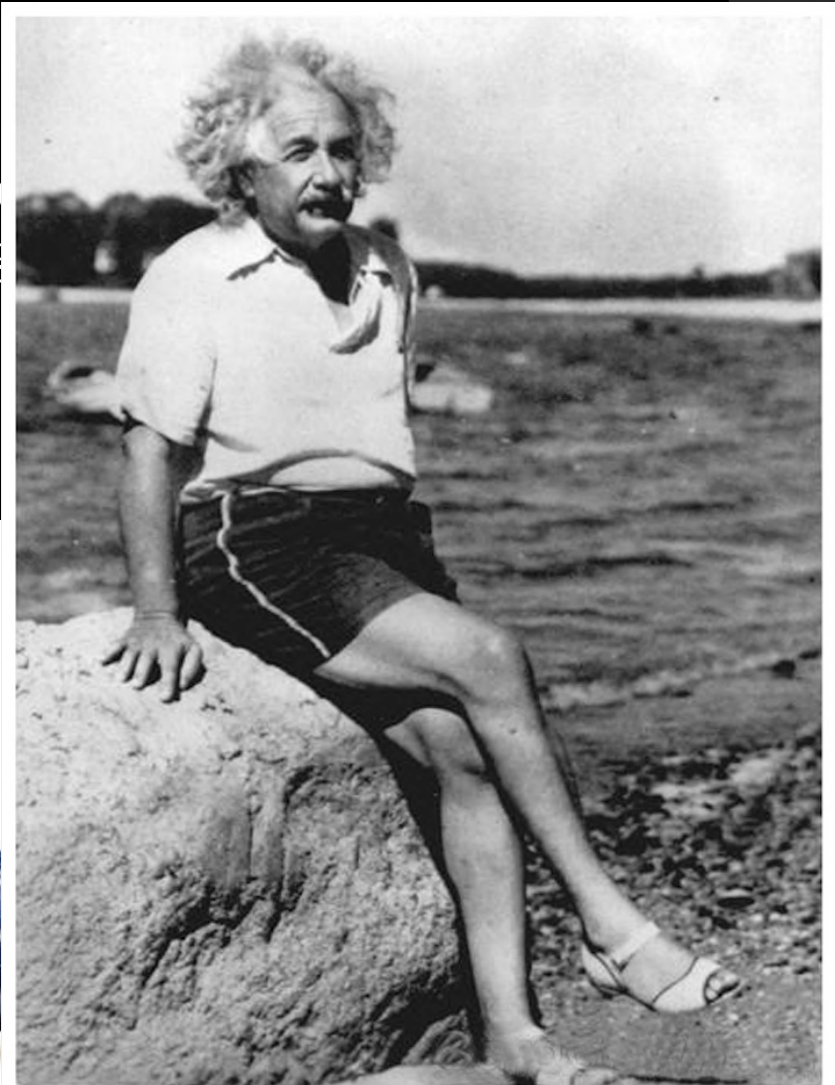
1916 - Einstein believed in a static Universe: he added the Cosmological Constant (Λ) to his Field Equation to obtain stability

$$\frac{8\pi G}{c^4} T_{\mu\nu} = R_{\mu\nu} - \frac{1}{2} R g_{\mu\nu} + \Lambda g_{\mu\nu}$$



Einstein will say: «that was my biggest blunder»

19
8



ne
y

1. Universe is expanding and cooling
2. Universe has a finite age (13.7 billions years)

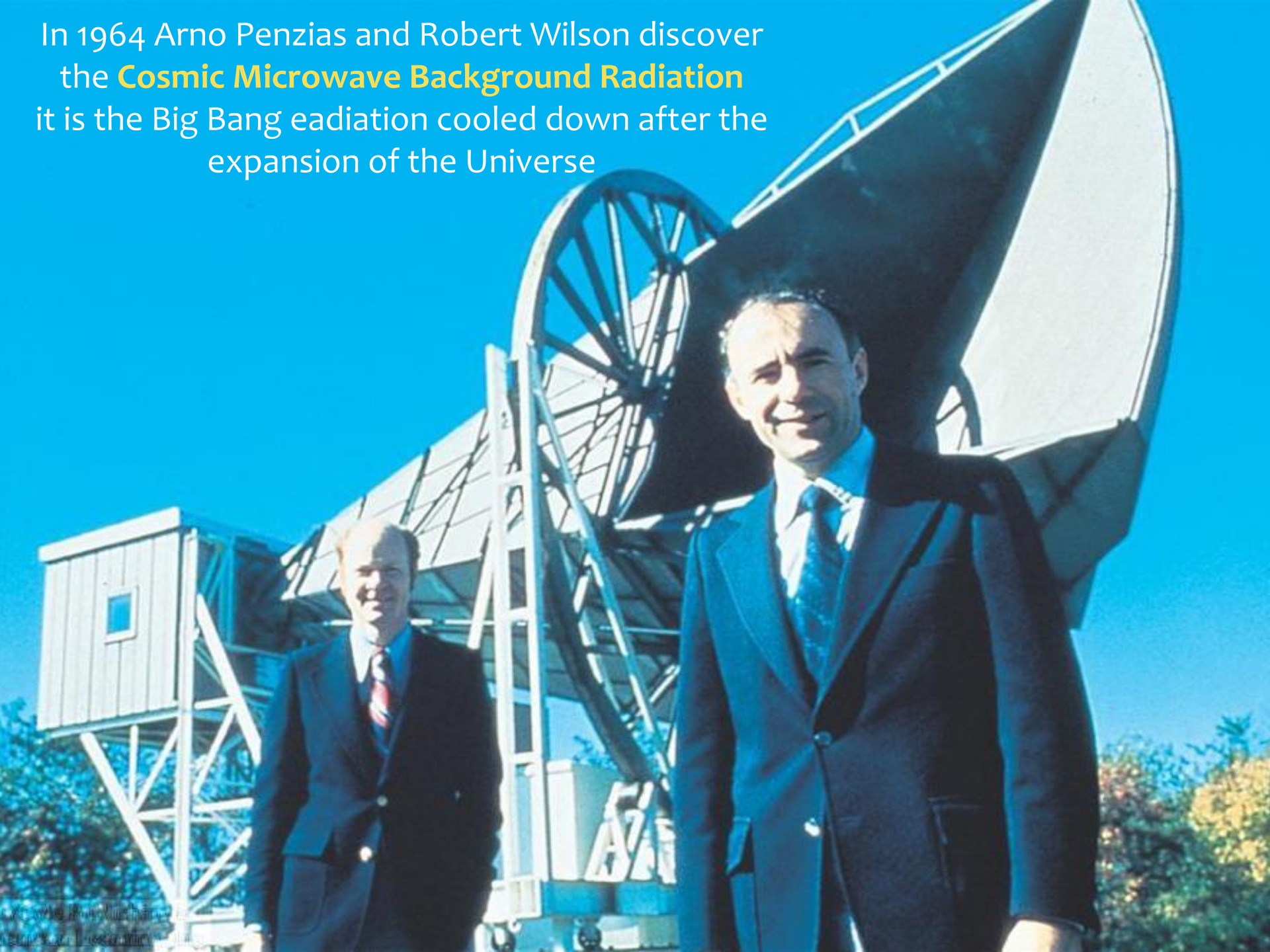


**the BIG
BANG
THEORY**

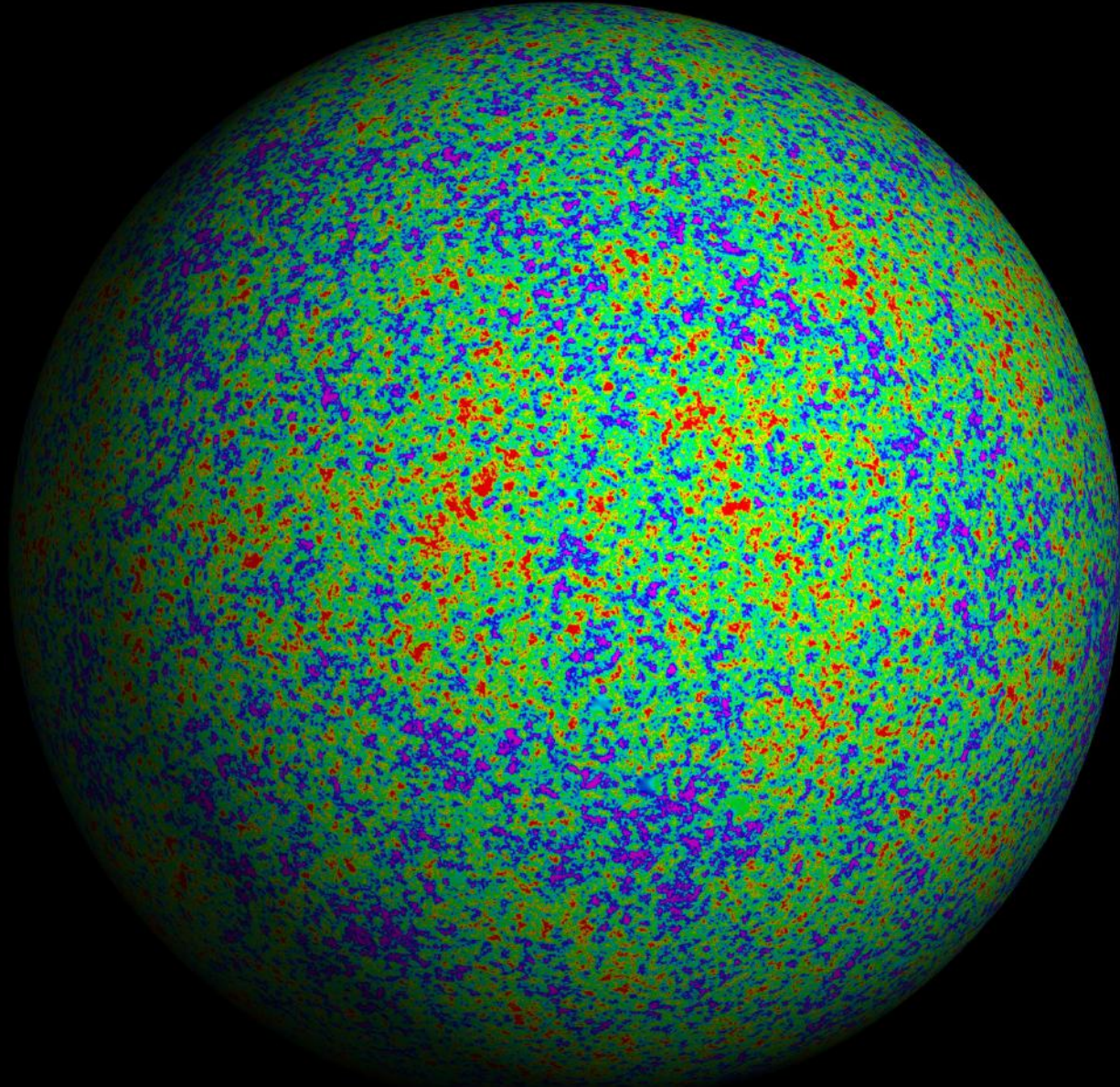
In fact we see a dark sky at night!



In 1964 Arno Penzias and Robert Wilson discover the **Cosmic Microwave Background Radiation** it is the Big Bang eadiation cooled down after the expansion of the Universe

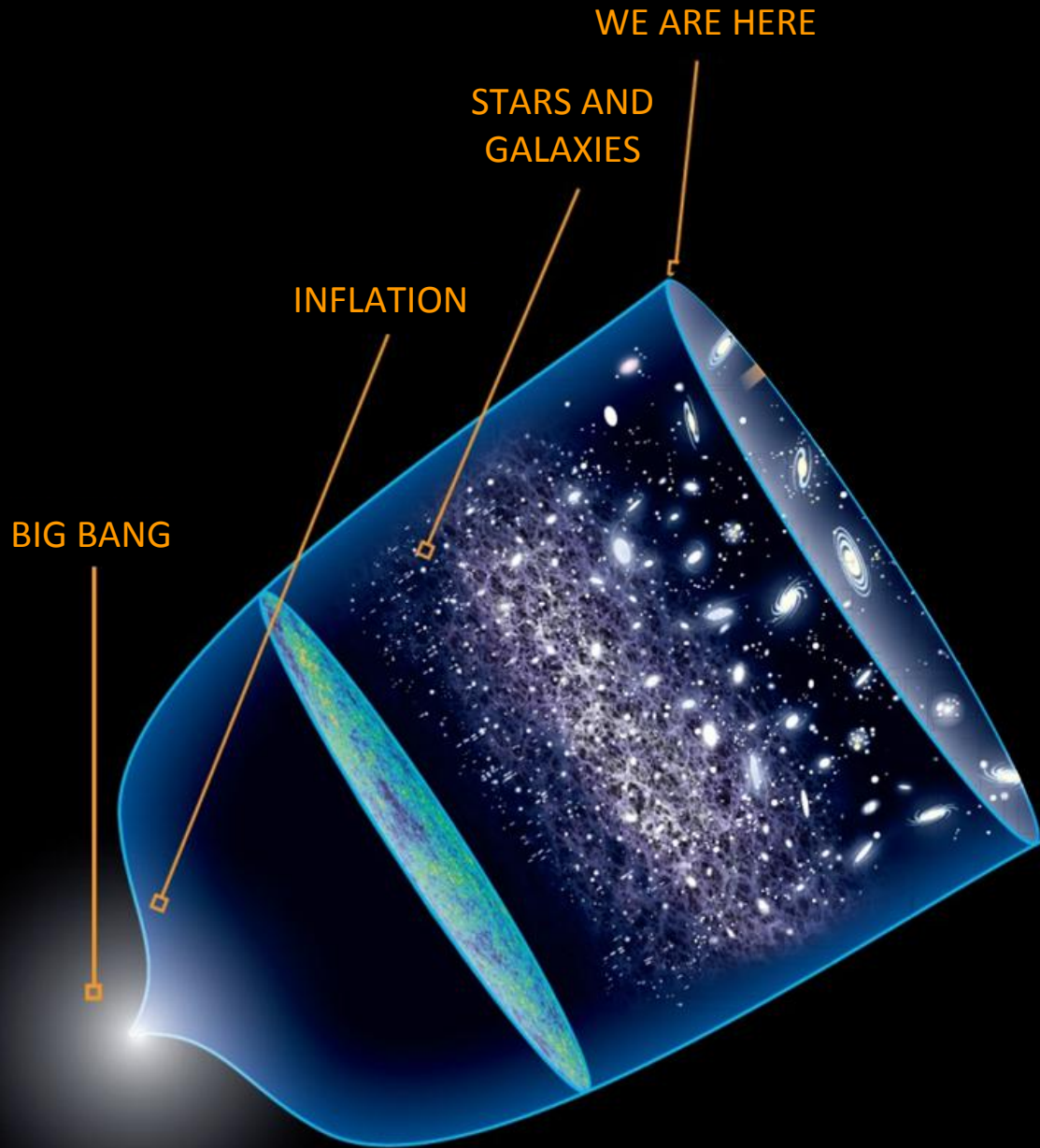


the experimental proof of the Big Bang Theory



a picture of the Universe when it was «only» 380,000 year-old
like having a picture of a 80 year-old man when he was 1 day-old

The Expanding Universe



Big Bang
(beginning of space and time)

10^{-30} s
Cosmic Inflation
(very fast expansion)

380000 years
Microwave Background
Radiation

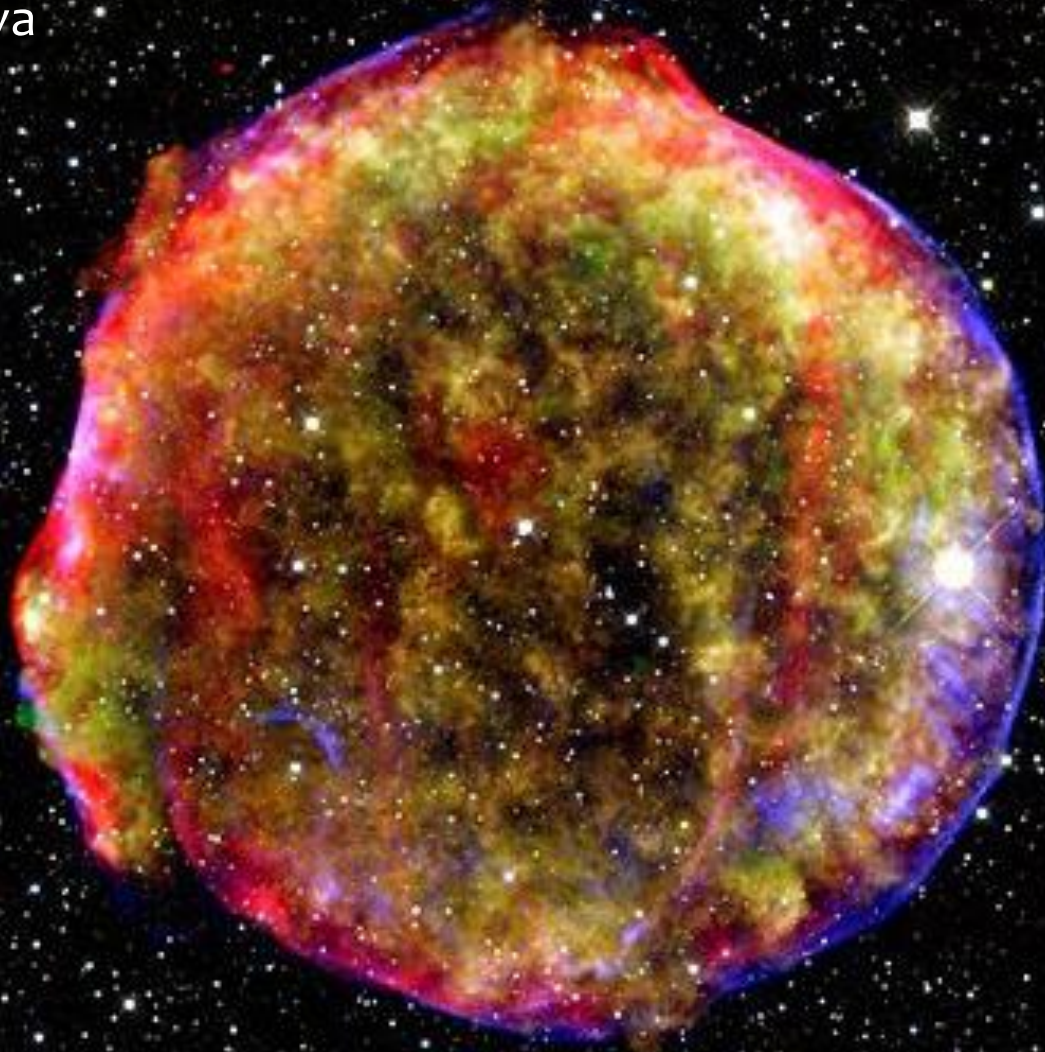
400 million years
Formation of first stars
Expansion slow down

13.7 billions years
Now

Type Ia Supernova



Tycho's 1572 Type Ia
Supernova



In 1998 we discovered that the expansion of the Universe is accelerating!

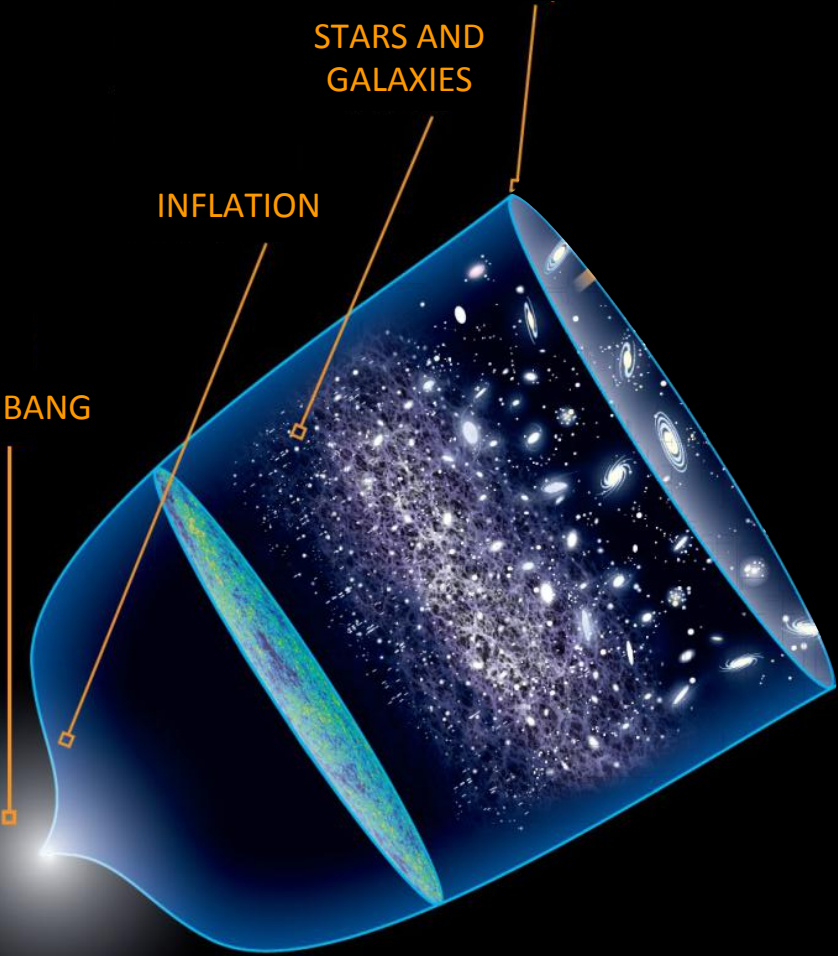
ACCELERATING EXPANSION

WE ARE HERE

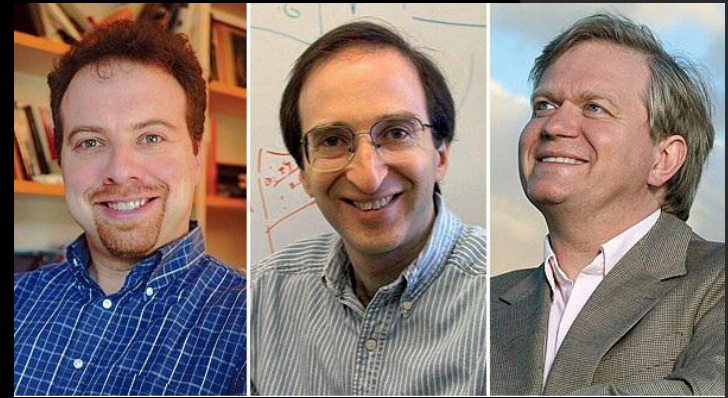
STARS AND GALAXIES

INFLATION

BIG BANG



Nobel 2011



Adam
Riess

Saul
Perlmutter

Brian
Schmidt

There must be an energy opposing to gravity:
Dark Energy



9 billion years ago

4 billion years ago

Present

T I M E

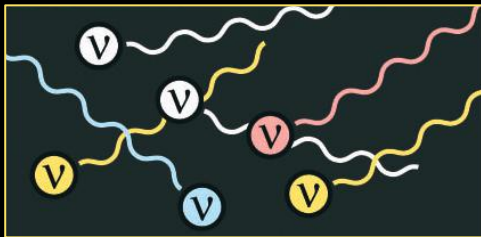
$$\frac{8\pi G}{c^4} T_{\mu\nu} = R_{\mu\nu} - \frac{1}{2}R g_{\mu\nu} + \Lambda g_{\mu\nu}$$

Einstein was right!

The Cosmological Constant Λ must be reintroduced to take into account the energy opposing to Gravity and accelerating the Universe expansion



0,025% - Heavy Elements (C, N, O, Si, Ni, Fe...)



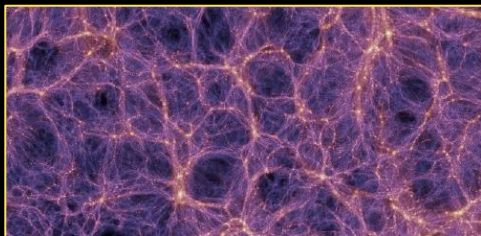
0,3% - Neutrinos



0,5% - Hydrogen/Helium in Stars



4,1% - Intergalactic Hydrogen/Helium



27% - Dark Matter



68% - Dark Energy

95% UNKNOWN

Dark Matter at Gran Sasso

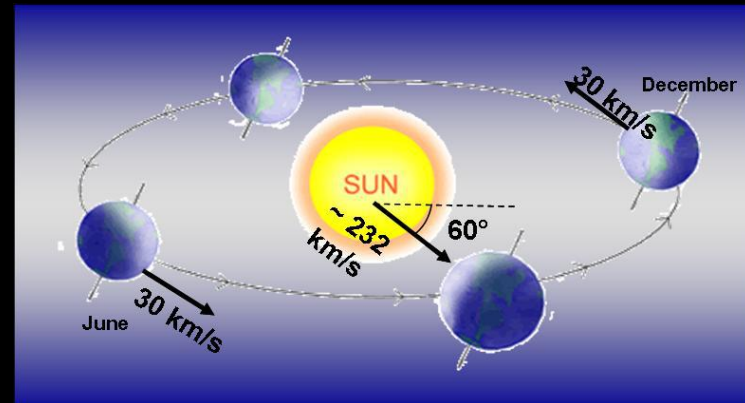


DAMA Experiment

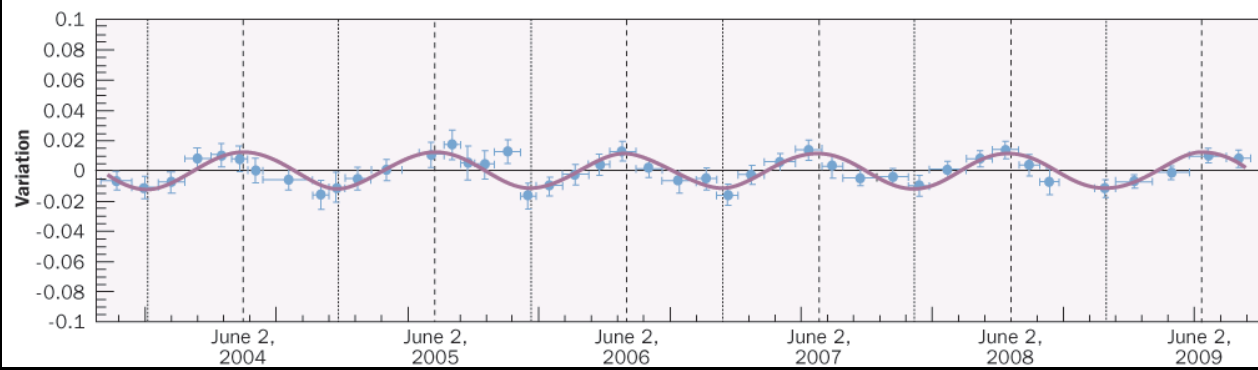
INFN

Laboratori Nazionali del Gran Sasso

Dark Matter search in very rare collisions with detectors



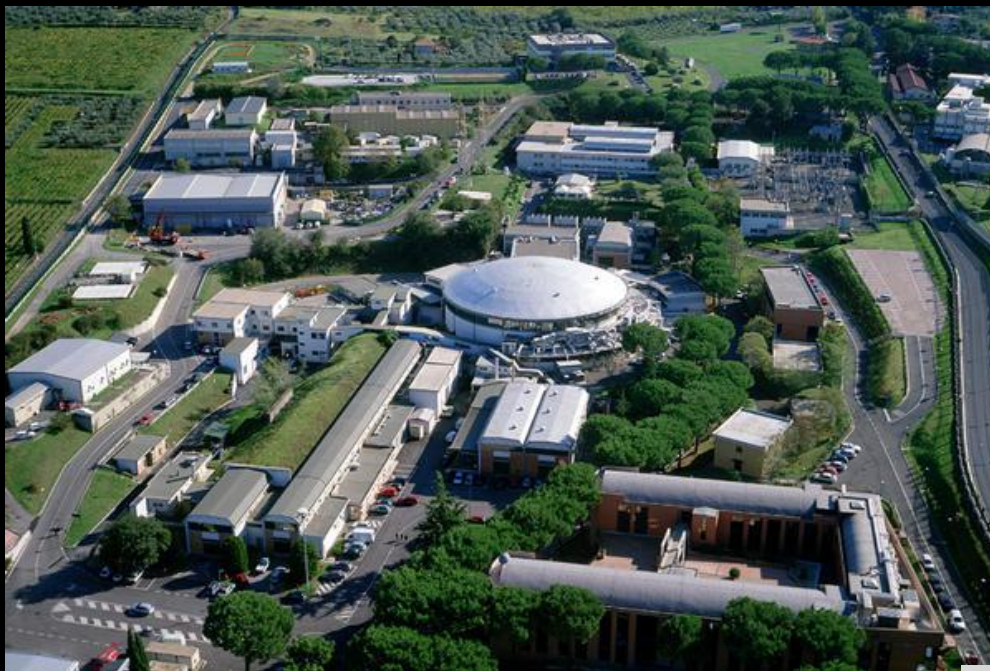
Seasonal modulation of detected collision



Earth fly through a
Dark Matter wind

We sail downwind in Winter
and windward in Summer

Dark Matter in Frascati



KLOE Experiment
INFN
Laboratori Nazionali di Frascati

Dark Matter search in
Matter-Antimatter collisions

Nothing has been found so far

Dark Matter mystery is far
from being solved
It is for sure an important
ingredient of the Universe!

